

LAN Screen Shot Software Manual

ADVANTEST

1. Outline

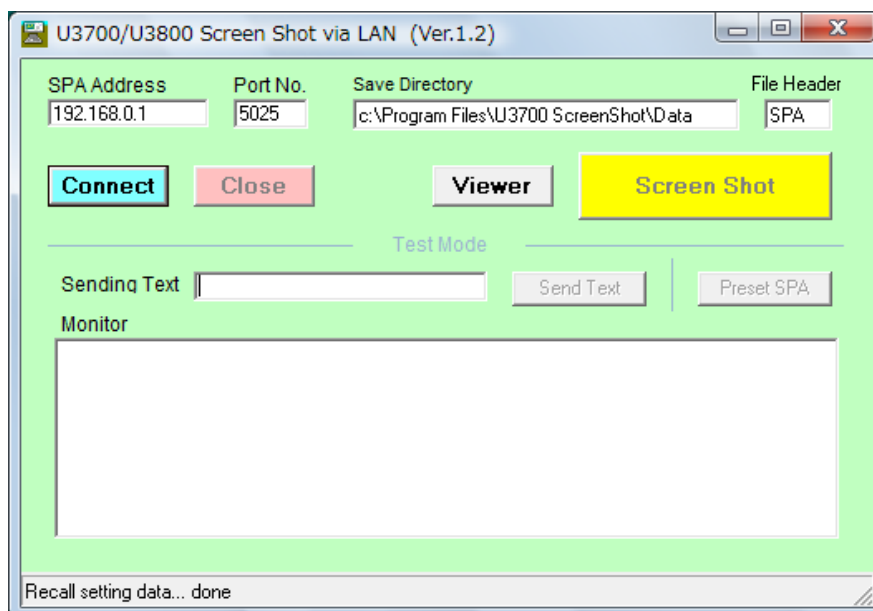
This sample software makes the screen shot file of your Spectrum Analyzer (SA) U3700/U3800 series directly on the personal computer by LAN connection. (The USB memory is installed in SA, the screen shot file is saved to the USB memory first, the USB is installed in PC next, and the operation becomes unnecessary though the file was copied usually.)

Attention: The software version of SA U3700 that operates this software becomes H00 or more. (Please refer to the manual for the confirm method of the version.) The software upgrade of SA U3700 is necessary to use this software at before H00 the confirmed version. Please inquire of our Sales Department or the MS Call Center. The confirmation of the software version of SA U3800 is unnecessary.

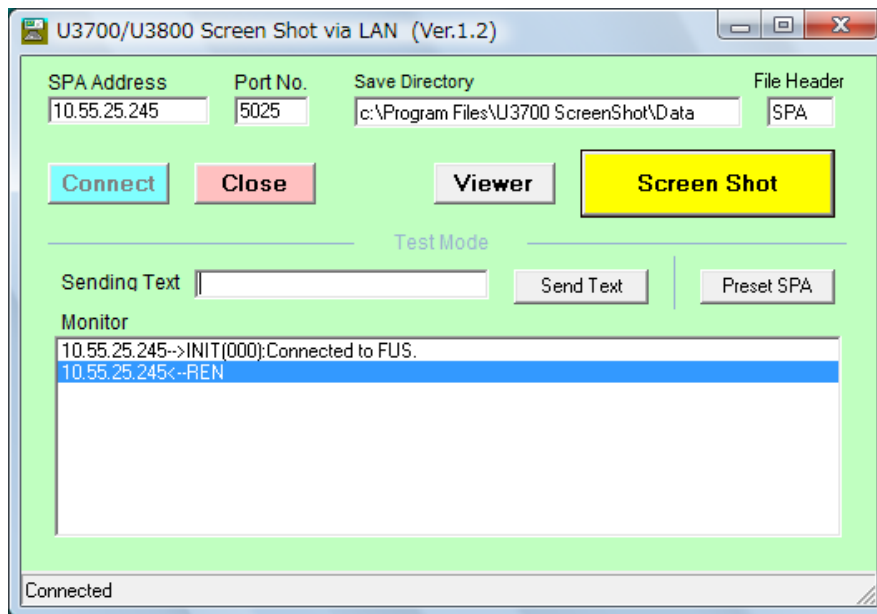
We will explain the handling of this software in this manual assuming that the installation of Internet Protocol address of the personal computer, Internet Protocol address of SA, and this software is completed first. The explanation of the Internet Protocol address setting etc. is in this Chapter 6 of this manual.

2. Start this sample software

- Start -> Program -> U3700 ScreenShot -> U3700 (U3800) ScreenShot
- The following screen appears on the personal computer.



- Confirm the text book of SPA Address (It is the Internet Protocol (IP) Address of SA).
- Port No. of SA is fixation by 5025. You need not change.
- Please push the Connect-key and confirm connection (The message is displayed).
- It changes into the following screen (The Screen Shot key becomes possibility).

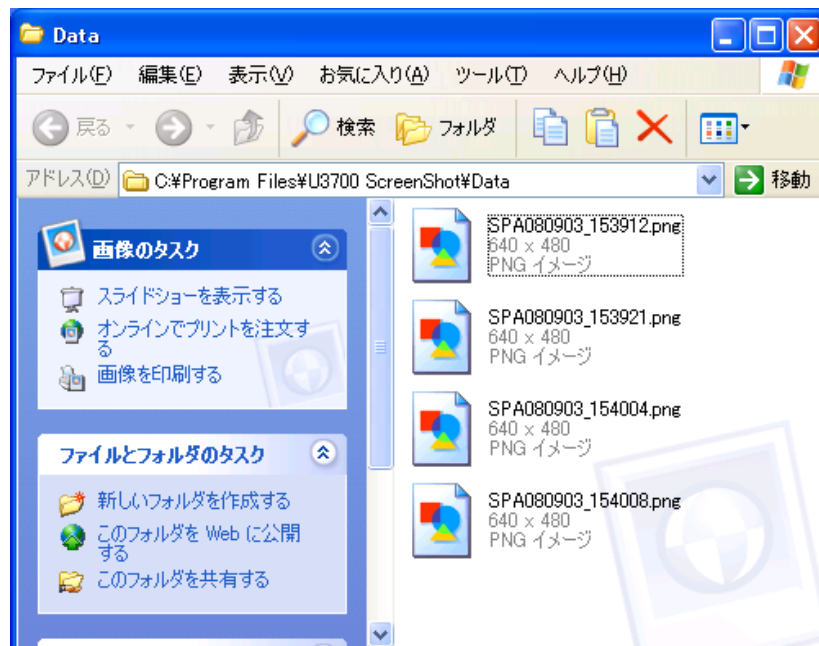


3. Make the Screen Shot File

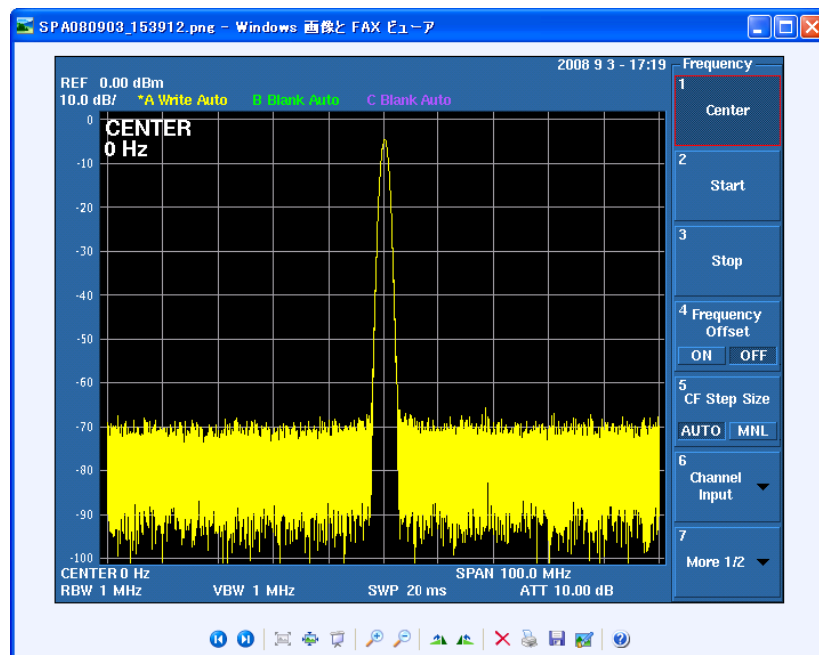
- When the Screen Shot key (Or, ENTER key) is pushed, the screen shot file of a present SA screen is made on the personal computer.
- Where is it make?
It is made for specified directory.
- Can it be changed?
It can be changed. However, specification directory should exist.
(Make the directory with the personal computer before this software is started.)
- By what file name is it made?
Date information is added to the name specified with File Header.
(Exp: SPA20130101_101030.png → Header + Jan/01/01 10:10:30)
File Header is revocable.

4. Confirm the Screen Shot File

- Please push the Viewer key. The content of Data Directory is seen.



- Please double-click the file that wants to be confirmed. The SA screen is seen.



5. Explain other functions.

● Program End: Push CLOSE first and terminates LAN connection.
X sign of the window is pushed, and the window is shut afterwards.
(Conditions such as IP and Save Directory are automatically saved everything and return to the previous state when the next software is started.)

■ Test Mode

Send Text: The GPIB command written in Sending Text is sent to SA.

If it is Query Command, the data is read.

The GPIB command is transmitted here and the remote control is possible.

Exp: When you sent *IDN? , this software reads the model information.

Preset SPA: Set the SA initialize.

■ About Remote/ Local

It is assumed remote only while the data of the screen shot is acquired.

Therefore, when the data income is completed, SA can be used at once.

And, the Screen Shot key is pushed when becoming the following screen that should be acquired.

■ About ON/OFF of the Soft Menu displayed in the screen shot

It doesn't set it to this software during starting though there is a command that displays a soft menu in the screen shot (Be turning it off when it is remote usually).

To display the software menu, MNRF ON is sent by Test Mode.

There is especially no sending necessity from Test Mode when software ends because it sets it to sending an automatically MNRF OFF usual mode.

(A soft menu in the panel operation is displayed regardless of the command of MNRF.)

(Additionally, please refer to the manual about the GPIB command.)

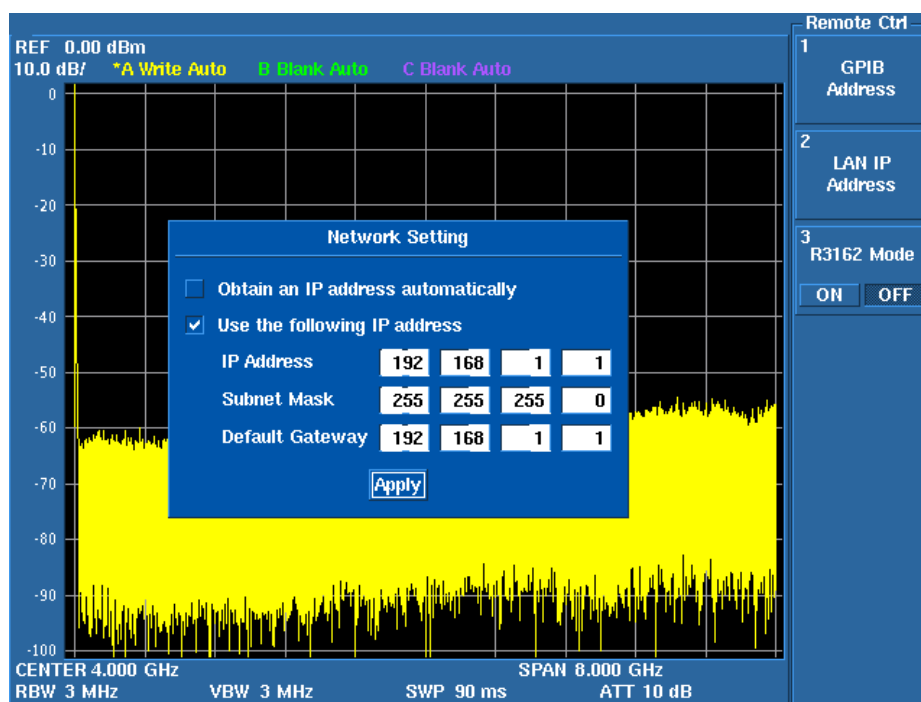
6. How to set IP Address

Set U3751 IP address

System – Remote Control – LAN IP address – Network Setting

Fif.1 shows Point-to-Point setting example

If you want to connect to LAN network, please ask IP address to network manager



Set PC IP address

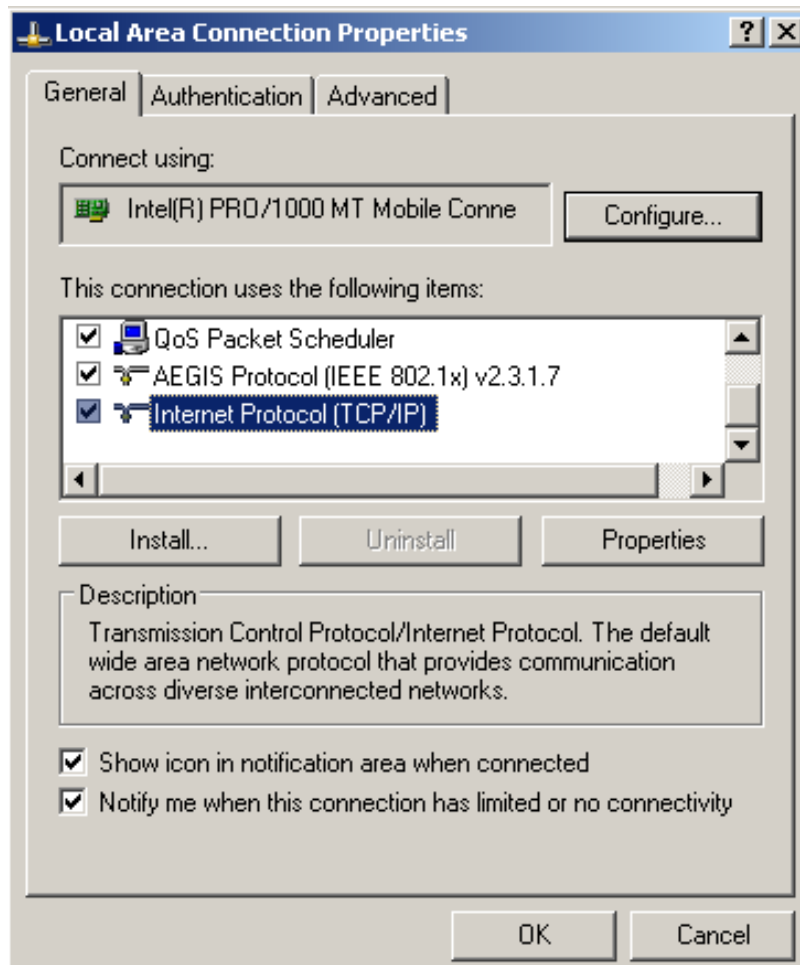
Just only for Point-to-Point connection. No necessary for LAN network connection.

For WIN2000

My network – Right click - Properties –

Local Area Connection - Right click - Properties –

Internet Protocol (TCP/IP) – Properties



Set IP Address

This IP address has to be set difference number from U3751

The screenshot shows the 'Internet Protocol (TCP/IP) Properties' dialog box with the 'General' tab selected. The dialog box has a title bar with a question mark and a close button. Inside, there is a text box explaining that IP settings can be assigned automatically or manually. Two radio buttons are present: 'Obtain an IP address automatically' (unselected) and 'Use the following IP address:' (selected). Below the selected radio button, there are three input fields: 'IP address:' with the value '192 . 168 . 1 . 2', 'Subnet mask:' with the value '255 . 255 . 255 . 0', and 'Default gateway:' with the value '192 . 168 . 1 . 2'. Below these, there are two more radio buttons: 'Obtain DNS server address automatically' (unselected) and 'Use the following DNS server addresses:' (selected). Below the selected radio button, there are two input fields: 'Preferred DNS server:' and 'Alternate DNS server:', both containing the value '. . .'. At the bottom right of the dialog box, there is an 'Advanced...' button. At the very bottom, there are 'OK' and 'Cancel' buttons.

Internet Protocol (TCP/IP) Properties

General

You can get IP settings assigned automatically if your network supports this capability. Otherwise, you need to ask your network administrator for the appropriate IP settings.

☐ Obtain an IP address automatically

☒ Use the following IP address:

IP address: 192 . 168 . 1 . 2

Subnet mask: 255 . 255 . 255 . 0

Default gateway: 192 . 168 . 1 . 2

☐ Obtain DNS server address automatically

☒ Use the following DNS server addresses:

Preferred DNS server: . . .

Alternate DNS server: . . .

Advanced...

OK Cancel

Connect LAN cable

Have to use **CLOSS CABLE** for Point-to-Point connection

Start the sample software

- Start -> Program -> U3700 ScreenShot -> U3700 (U3800) ScreenShot
- The following screen appears on the personal computer.
- Please push the Connect key, and connect it with SA.
(When the connection is completed, connected message is displayed in the display area in figure.)

