

CSV/XML VIEWER FOR U3800 SERIES OPERATION MANUAL

1	INTRODUCTION	2
1.1	System Requirements	2
1.2	Trademarks	2
2	HOW TO USE	2
2.1	Run the CSV-XML Viewer.....	2
2.2	Convert file.....	2
2.3	Form.....	4
2.4	Function	5
2.5	Menu bar	5
2.6	When a horizontal axis is a Logarithm display	6
2.7	Option.....	7
2.8	Caution	7

Creation/ Modification	Date	Author	Content
Version 2.0	2012.10.22	H.N WJ	Creation
Version 2.1	2013.02.01	H.N WJ	Software version up

1 INTRODUCTION

This program is able to convert CSV / HML data of U3800 series into Excel.

1.1 System Requirements

Software : Excel2003、Excel2007、Excel2010
OS : Windows XP, Windows Vista, Windows 7

*Conversion is different by Excel2003 and Excel2007, Excel2010.

1.2 Trademarks

- ADVANTEST is a trademark of Advantest Corporation.
- Visual Basic 6.0 and Visual Basic 2008 are trademarks or registered trademarks of Microsoft Corporation in the United States and other countries.
- All other product names described in this manual are the trademarks of their respective owners.

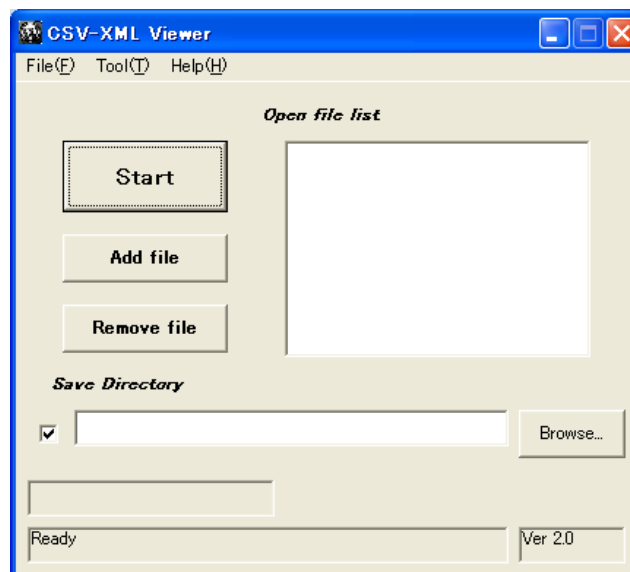
2 HOW TO USE

2.1 Run the CSV-XML Viewer

Run the CSV-XML Viewer_ver2.1.exe file.

2.2 Convert file

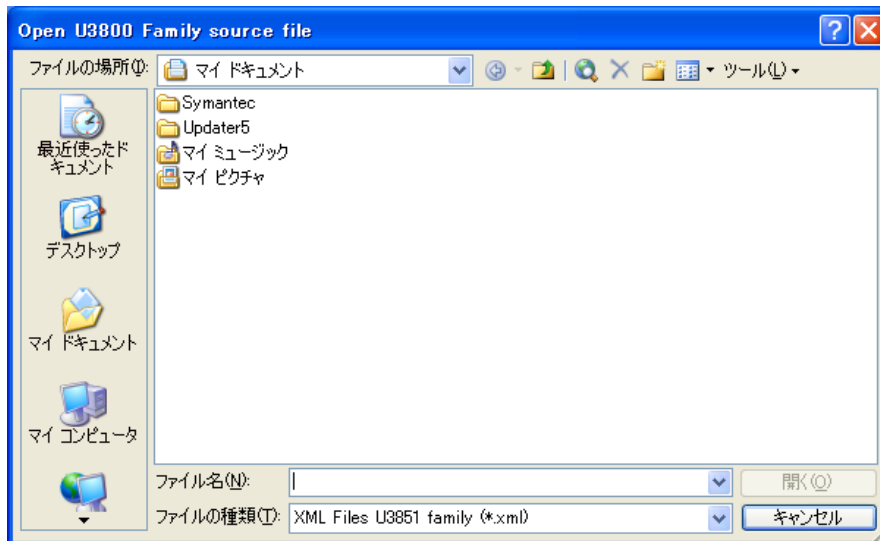
1. Run the program and XML-CSV Viewer form is displayed.



Main Form

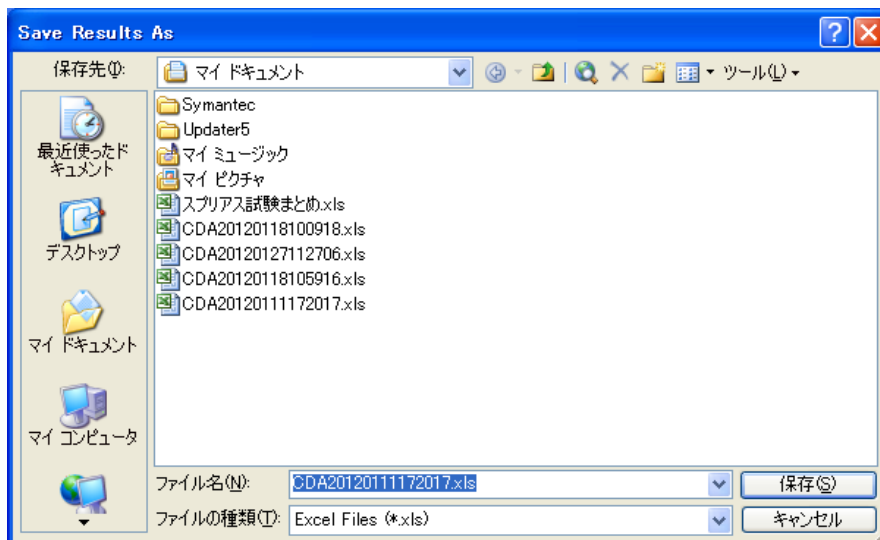
Click the "Start" Button.

2. Select Convert file



Choose file type (XML, CSV).
Select the path to source file and hit the Open Button.

3. Select the path to directory to save.

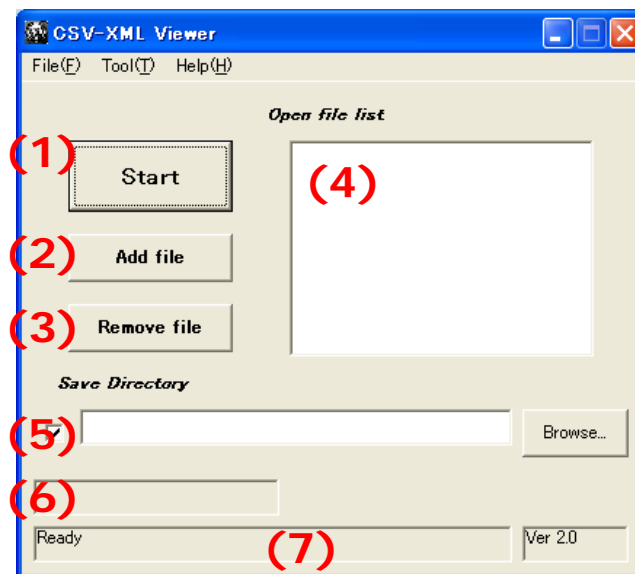


Click the Save Button, then conversion is started.

4. It will finish , if the progress bar will be 100%.

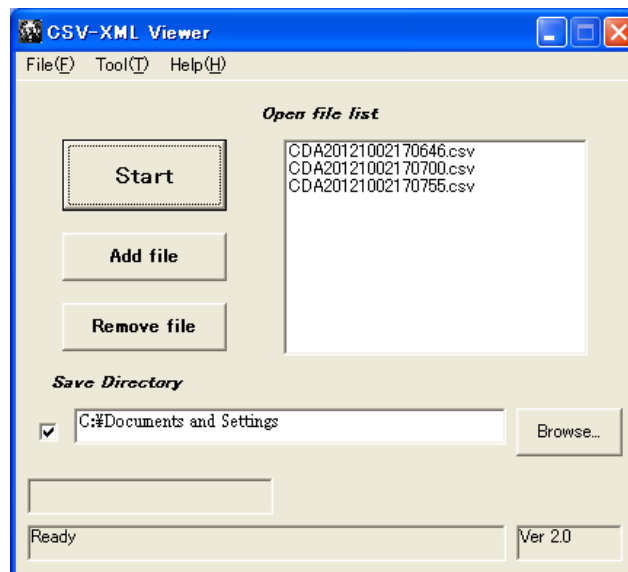
2.3 Form

About form's button and field. (Please refer to "2-4 Function")



- | | |
|--------------------------|---|
| (1) "Start" Button | Start to convert the file. |
| (2) "Add file" Button | Add the file to the Open file list. |
| (3) "Remove file" Button | Remove selected files from the Open file list. |
| (4) "Open file list" | The list of files to convert. (*2-4_1. Open file list) |
| (5) "Save Directory" | The directory's address to save. (*2-4_2. Setting save directory) |
| (6) "Progress bar" | Progress of the program. |
| (7) "Message" | The current status of the program. |

2.4 Function



1. Open file list

If you make the list that you want to convert, you can convert list's files.
Two or more files are convertible at once.

How to make the list

- Click the "Add file" button, and select the source file.
- Choose the files you want to convert, and drag to a form.

If you want to remove files from the list, you choose their files, and Click the "Remove" file button.

2. Setting save directory

When you input a save pass into the Save directory, the file is saved automatically.

A pass becomes invalid if you exclude a check from the Save directory.

3. Drag and Drop to icon

If you drag and drop the files into icon, the files are started to convert.

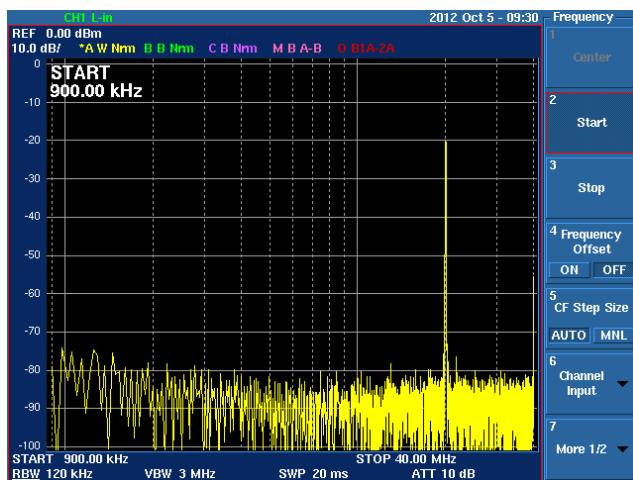
2.5 Menu bar

File	Save	: Save the Save directory and Option setup
	Add file	: Add a file to the Open file list.
	Remove file	: Remove selected files from the Open file list.
	Remove all file	: Remove all files from the Open file list.
	Start	: Start to convert file.
	End	: Close CSV-XML Viewer.
Tool	Option	: Option setup.
Help	version	: CSV-XML Viewer version data.
	Excel version	: The version of Excel installed.
	OS version	: The OS version of PC.

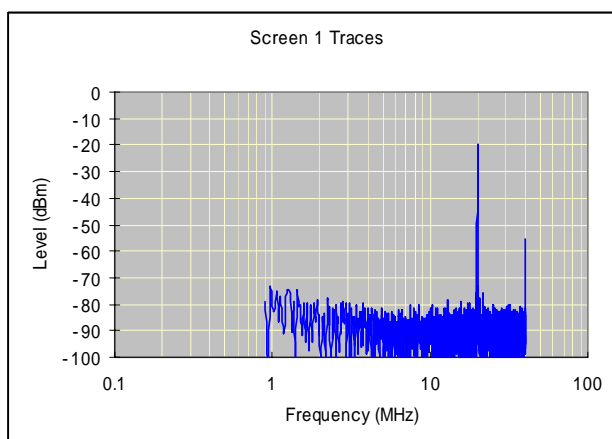
2.6 When a horizontal axis is a Logarithm display

When a horizontal axis displays the data of a Logarithm display, display waveforms differ in U3800 series and this program.

In the case of U3800 series, although displayed from the middle of Decade, when creating a graph by Excel, it cannot display from the middle of Decade.



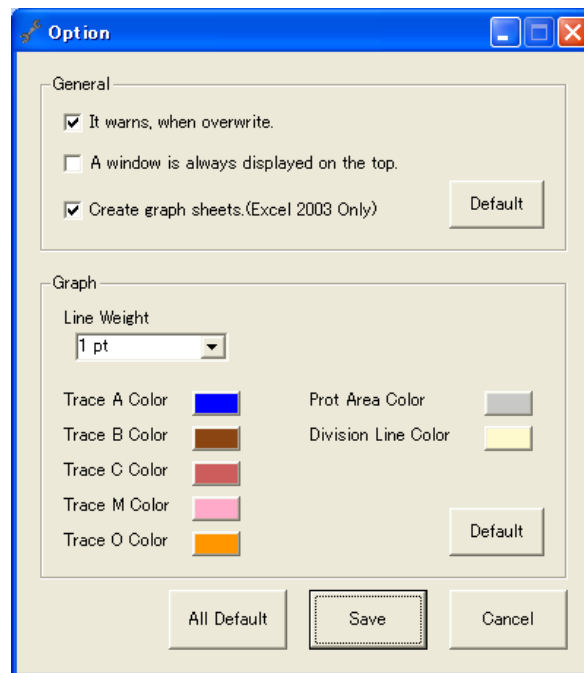
U3800 waveform



Excel graph

2.7 Option

Selection of the option of a menu bar will display the following forms.



The method of deployment and a setup of a graph can be changed.

1. General item
A setup about conversion of a file is carried out.

Item
It warns, when overwrite. ON/OFF
A window is always displayed on the top. ON/OFF
Create graph sheet. ON/OFF
2. Graph item
The graph to convert is set up.

Item
Line weight
Line color
Prot area color
Division line color

A setup can be saved and reflected when you click a button.

2.8 Caution

Don't change the ".ini" file.

Don't operate Excel during conversion.