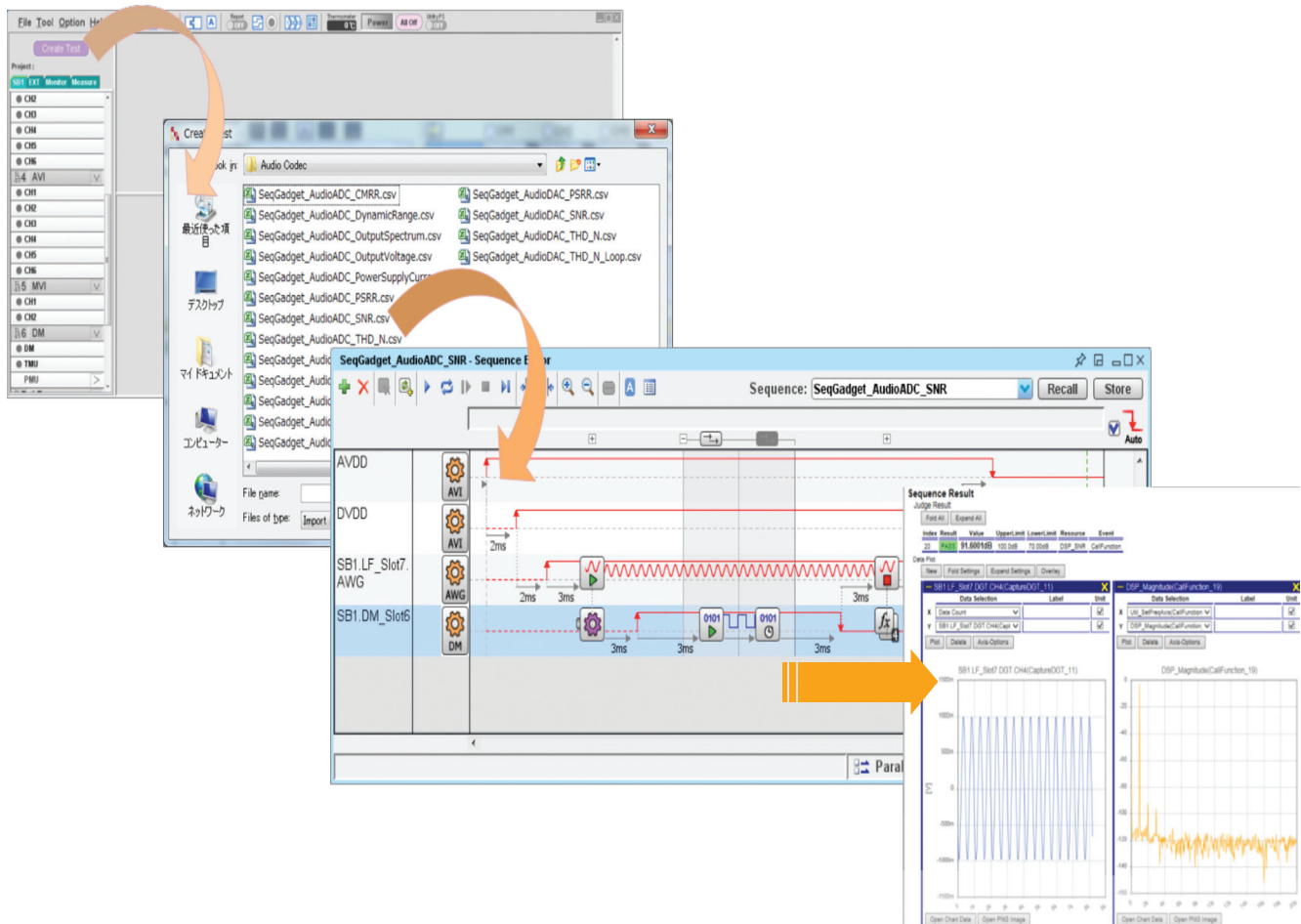


Sequence Gadget

EVA100 MEASUREMENT SYSTEM

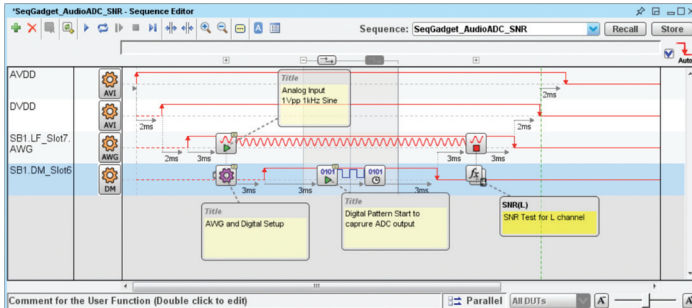


TEMPLATE-BASED TEST SEQUENCES

Using a variety of templates,
the analog parameter calculation function
performs all needed test sequences quickly.

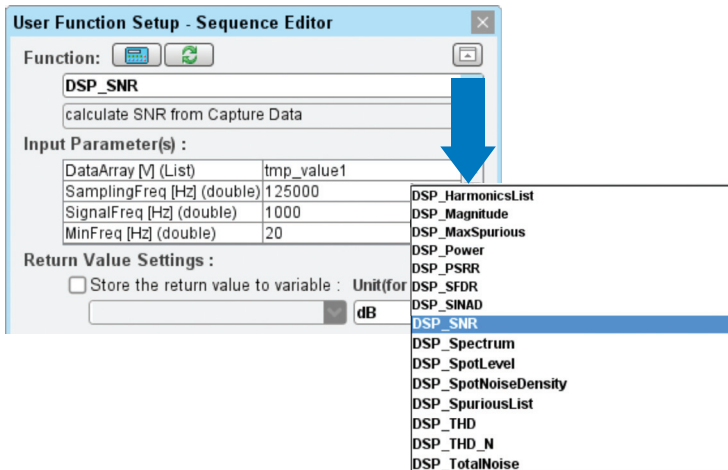
■ Test Sequences on a Standard Template

Development times can be reduced by using test sequences on standard templates, which feature easy-to-understand measurement sequences for iconic events and useful comment areas. This avoids the need for complex programming source codes.



■ Calculation Functions for Each Parameter

Standard templates include useful calculation functions for each analog parameter, such as SNR, THD+N and FFT. Users simply select the desired function from a list.



■ Customized Test Sequence Template

Finalized test sequences for custom gadgets can be generated using an export function, speeding up the development of new products or families of devices.

Gadget List

Audio Codec

- AudioADC_CMRR
- AudioADC_DynamicRange
- AudioADC_OutputSpectrum
- AudioADC_OutputVoltage
- AudioADC_PowerSupplyCurrent
- AudioADC_PSRR
- AudioADC_SNR
- AudioADC_THD_N
- AudioADC_THD_N_Loop
- AudioDAC_DynamicRange
- AudioDAC_OutputSpectrum
- AudioDAC_OutputVoltage
- AudioDAC_PowerSupplyCurrent
- AudioDAC_PSRR
- AudioDAC_SNR
- AudioDAC_THD_N

Common

- I2CControl_Custom
- I2CControl_Hex
- I2CControl_RegMap
- PatternExec_Custom
- SignalCapture_SCAP
- SPIControl_Custom
- SPIControl_Hex
- SPIControl_RegMap

DC-DC Converter

- DutyCycle
- Efficiency_Loop
- Hysteresis
- InputVoltage
- LineRegulation
- LineRegulation_Loop
- LoadRegulation
- LoadRegulation_Loop
- OscillatorFrequency
- OutputVoltage
- PowerOnOff
- PowerSupplyCurrent
- PowerSupplyCurrent_Loop
- SoftStartPeriod
- TransientResponse

OP Amplifier

- InputBiasCurrent
- InputBiasCurrent_Loop
- InputOffsetCurrent
- InputOffsetCurrent_Loop
- MaxOutputVoltage
- MaxOutputVoltage_Loop
- OffsetVoltage_vs_InputCMVoltage
- OffsetVoltage_vs_InputCMVoltage_Loop
- OffsetVoltage_vs_OutputVoltage
- OffsetVoltage_vs_OutputVoltage_Loop
- OffsetVoltage_vs_PSVoltage
- OffsetVoltage_vs_PSVoltage_Loop
- PowerSupplyCurrent
- PowerSupplyCurrent_Loop
- PulseResponse

ADVANTEST®

ADVANTEST CORPORATION

www.advantest.com

© 2015 ADVANTEST CORPORATION

EVA Project E-mail:info_eva@advantest.com

RL2015-010, Rev.E1